

Greater Norwich Local Plan

Policies Map

Norwich

Contents

Introduction..... 3

GNLP Policy Map – Norwich City Centre..... 5

Norwich Local Plan – City Centre 6

GNLP Policy Map – Norwich North..... 7

Norwich Local Plan – Norwich North 8

GNLP Policy Map – Norwich South 9

Norwich Local Plan – Norwich South..... 10

Introduction

Due to the size of the Greater Norwich Local Plan area the policies map is split into three separate booklets:

- Broadland
- Norwich
- South Norfolk

Plans to be superseded by the Greater Norwich Local Plan:

- The Joint Core Strategy for Broadland, Norwich and South Norfolk (adopted 2011 with amendments adopted 2014)
- Broadland Site Allocations Development Plan Document (2016)
- Norwich Site Allocations and Site-Specific Policies Local Plan Document (2014)
- South Norfolk Local Plan Site-Specific Allocations and Policies Document (2015) except for the smaller villages in South Norfolk that will be addressed through a new South Norfolk Village Clusters Housing Allocations Local Plan.

Plans to be carried forward and used in conjunction with the Greater Norwich Local Plan:

- [Old Catton, Sprowston, Rackheath & Thorpe St Andrew Growth Triangle Area Action Plan \(2016\)](#)
- [Long Stratton Area Action Plan \(2016\)](#)
- [Wymondham Area Action Plan \(2015\)](#)
- [Broadland Development Management Policies Document \(2015\)](#)
- [Norwich Development Management Policies Document \(2015\)](#)
- [South Norfolk Development Management Policies Document \(2015\)](#). Map 1.3(1) Key Diagram March 2013 (see page 149) will be superseded by the Key Diagram in the Greater Norwich Local Plan Strategy. The remainder of the document is to be carried forward.

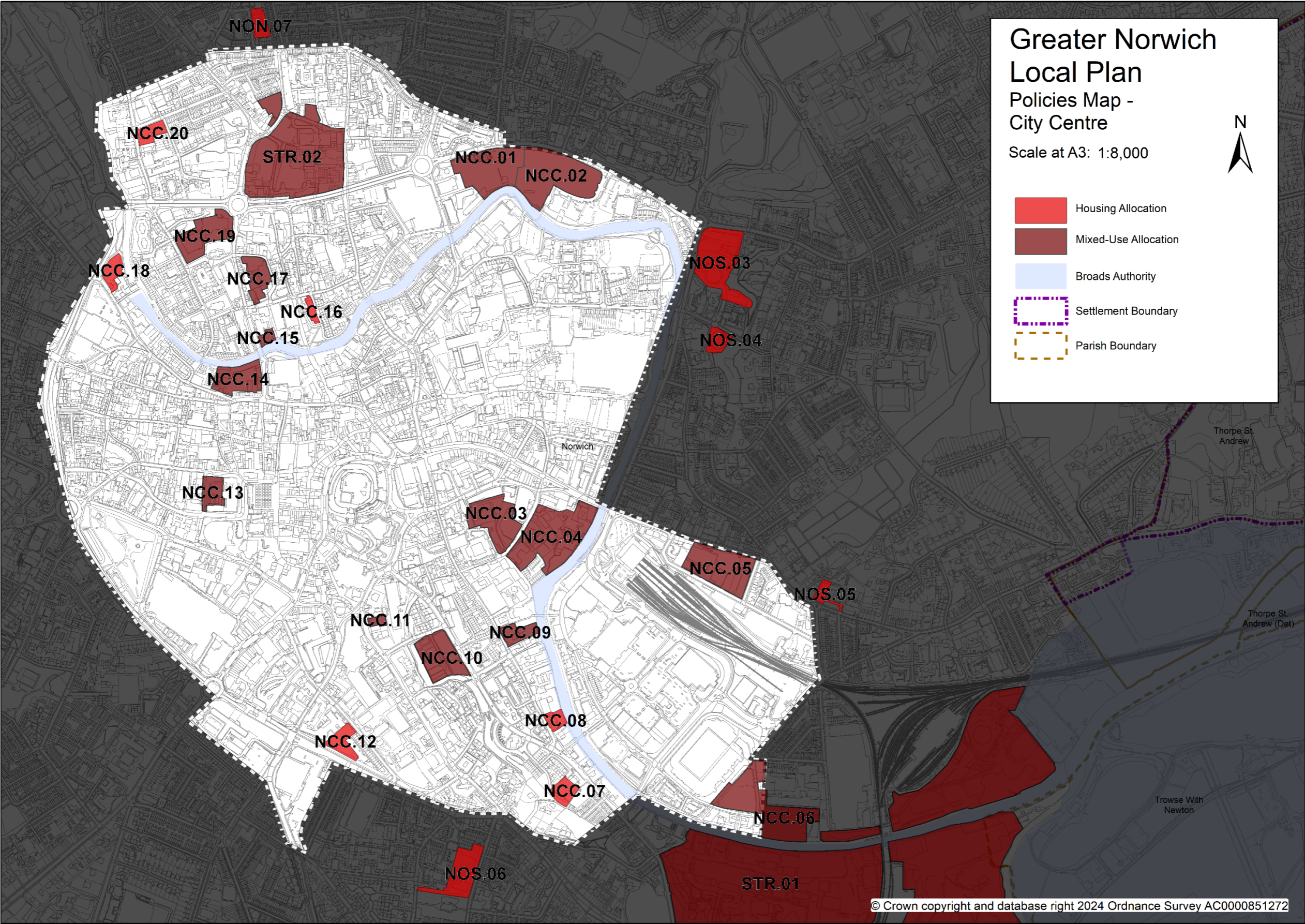
GNLP allocations that amend parts of Area Action Plans (AAPs):

GNLP Reference in Sites Document	Site name	Explanation
B.RA.1	Land to the west of Green Lane West Rackheath	This housing site was not allocated within the Growth Triangle AAP.
B.RA.2	Land at Heathwood Gospel Hall, Rackheath	A small part of a strategic employment site in the Growth Triangle AAP is allocated for housing development through the GNLP.
STR.10	Land off Blue Boar Lane/Salhouse Road, White House Farm, Sprowston	This strategic scale site was not previously allocated through the Growth Triangle AAP.
S.WY.1	Land at Johnsons Farm, Wymondham	Additional housing sites in Wymondham which were not allocated in the AAP.
S.WY.2	Land north of Tuttles Lane, Wymondham	

Neighbourhood plans to be used in conjunction with the Greater Norwich Local Plan:

Parish	Authority	Date Made	End Date
Acle	BDC	February 2015	2026
Aylsham	BDC	July 2019	2038
Blofield	BDC	July 2016	2036
Brundall	BDC	May 2016	2026
Cringleford	SNC	January 2014	2026
Drayton	BDC	July 2016	2026
Diss and District	SNC	October 2023	2038
Easton	SNC	December 2017	2042
Gt & Lt Plumstead	BDC	July 2015	2034
Hellesdon	BDC	December 2017	2026
Horsford	BDC	July 2018	2038
Long Stratton	SNC	October 2021	2036
Mulbarton	SNC	February 2016	2030
Old Catton	BDC	July 2016	2035
Poringland	SNC	July 2021	2039
Rackheath	BDC	July 2017	2037
Redenhall with Harleston	SNC	October 2022	2038
Salhouse	BDC	July 2017	2026
Spixworth	BDC	July 2021	2039
Sprowston	BDC	May 2014	2026
Starston	SNC	December 2022	2042
Strumpshaw	BDC	July 2014	2026
Taverham	BDC	July 2021	2040
The Tivetshalls	SNC	December 2022	2042
Wroxham	BDC	March 2019	2039
Wymondham	SNC	July 2023	2038

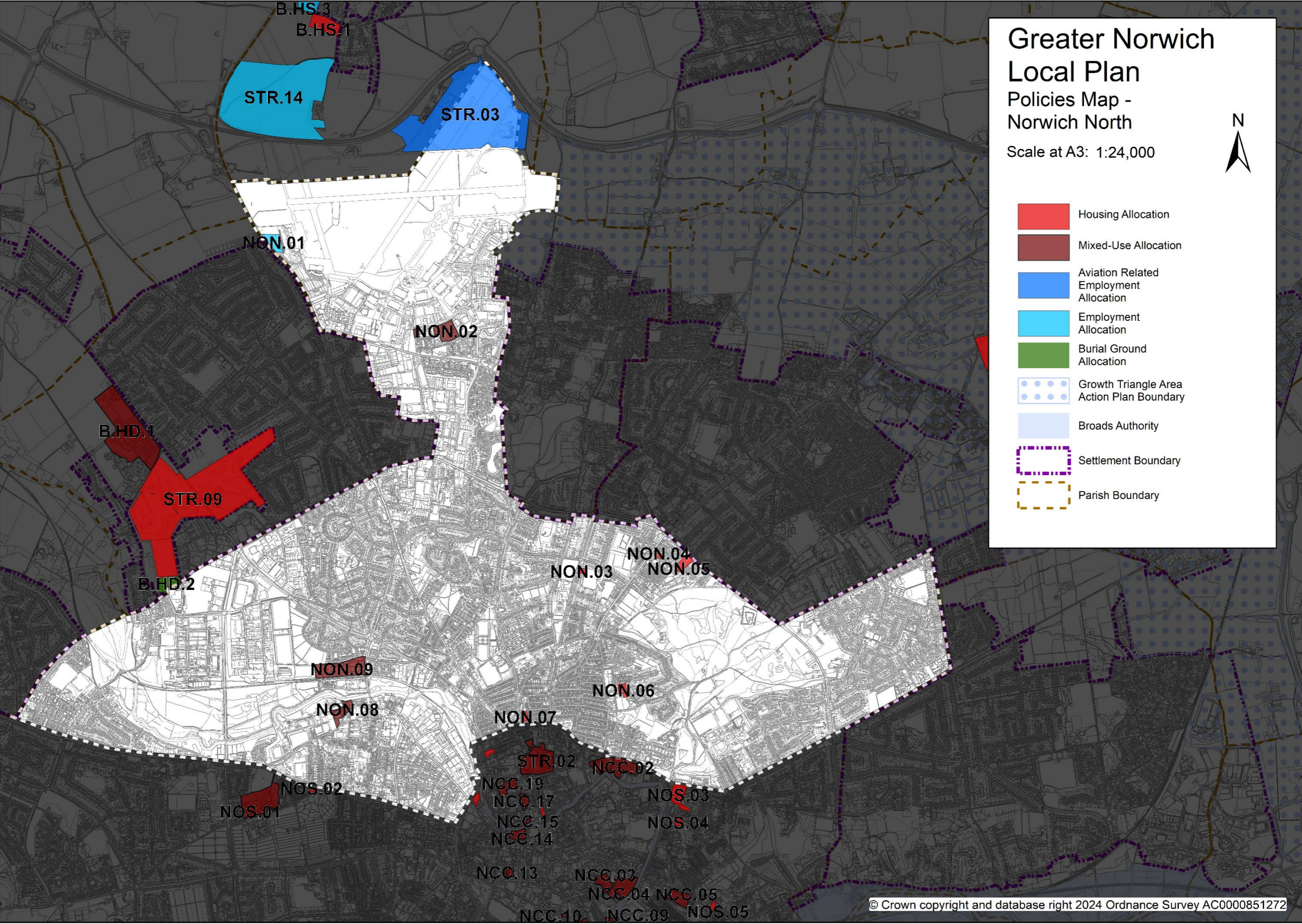
In addition, there are 7 qualifying bodies in Broadland which have designated their neighbourhood area and 7 in South Norfolk. This means they have committed to developing a neighbourhood plan. There is also one neighbourhood area designated within Norwich.



Norwich Local Plan – City Centre

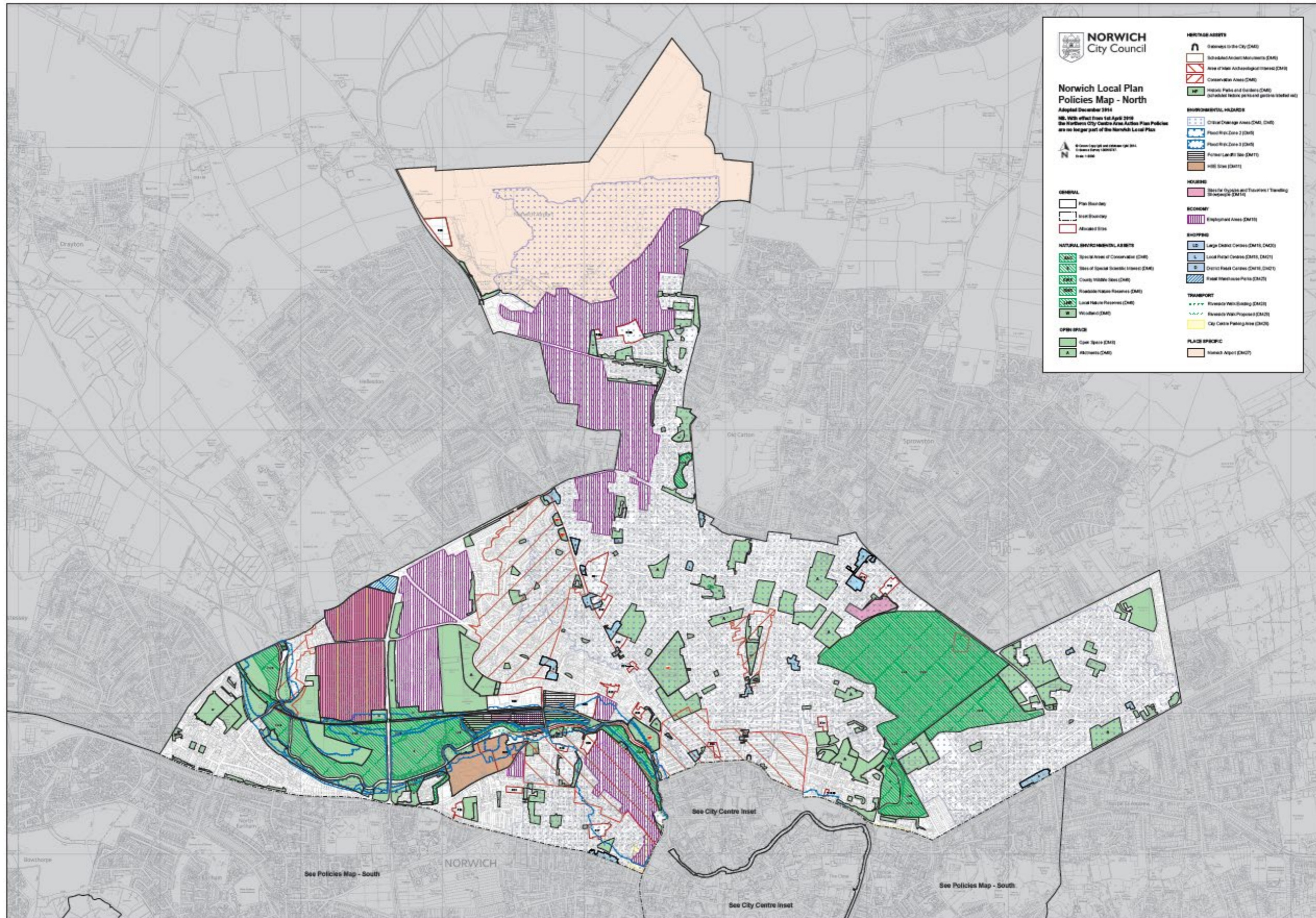
The allocations shown in this Policies Map WILL be replaced by the Greater Norwich Local Plan. The Development Management Policies (shown from the Norwich City Council Development Management DPD) are NOT replaced by the Greater Norwich Local Plan. For a high-resolution version see the [Norwich City Council Local Plan Policies Maps](#).

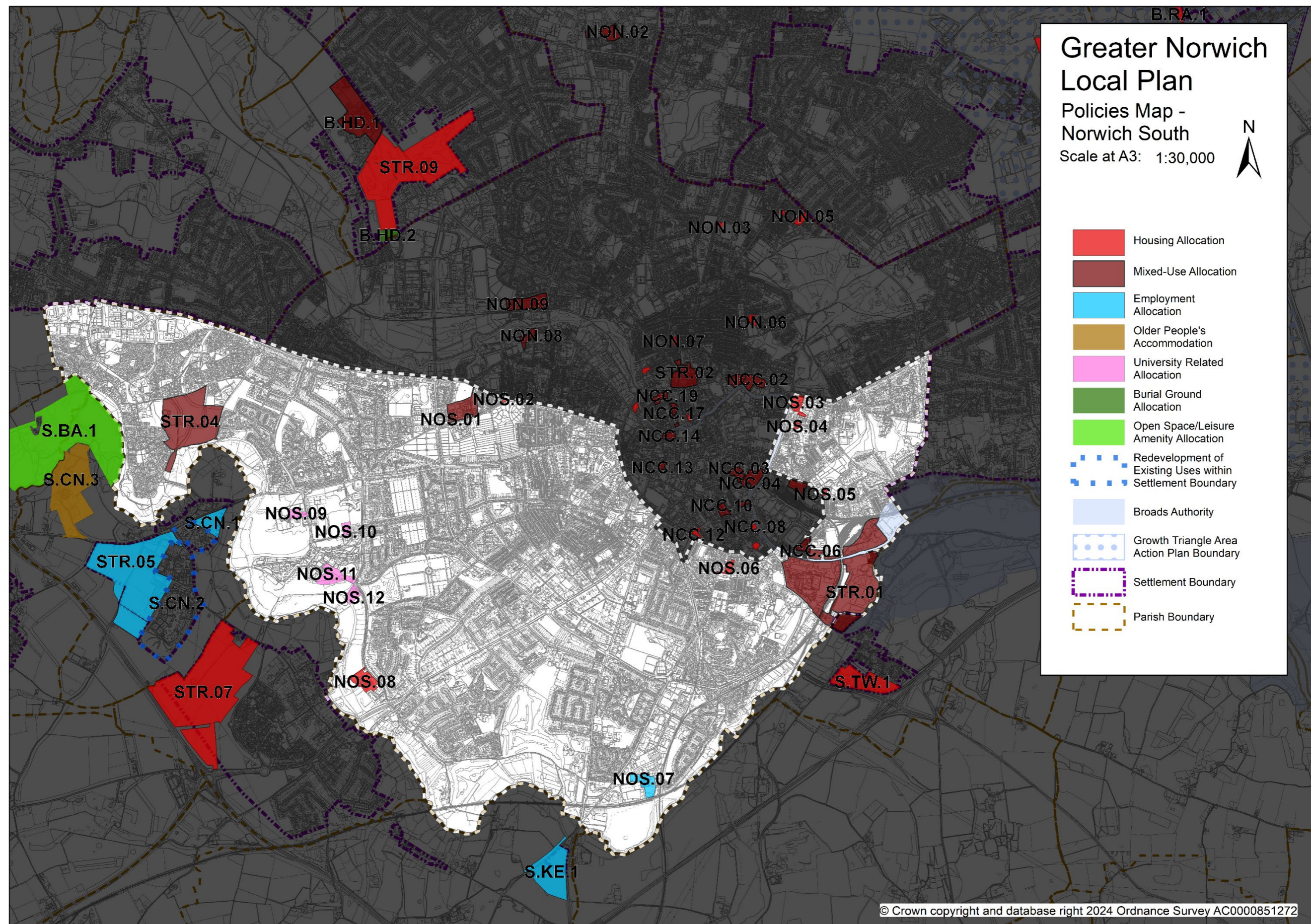




Norwich Local Plan – Norwich North

The allocations shown in this Policies Map WILL be replaced by the Greater Norwich Local Plan. The Development Management Policies (shown from the Norwich City Council Development Management DPD) are NOT replaced by the Greater Norwich Local Plan. For a high-resolution version see the [Norwich City Council Local Plan Policies Maps](#).





Norwich Local Plan – Norwich South

The allocations shown in this Policies Map WILL be replaced by the Greater Norwich Local Plan. The Development Management Policies (shown from the Norwich City Council Development Management DPD) are NOT replaced by the Greater Norwich Local Plan. For a high-resolution version see the [Norwich City Council Local Plan Policies Maps](#).

