

Norwich Road, Aylsham
Opportunities and Constraints

Client Norfolk Homes
Date January 2020

Drawing no. 2019-364-001
Revision

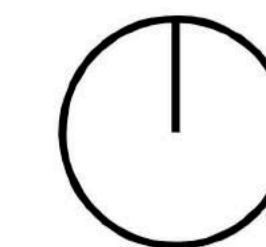
Drawn by LBL
Checked by




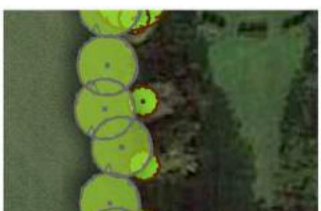


Scale 1:1000 @ A1

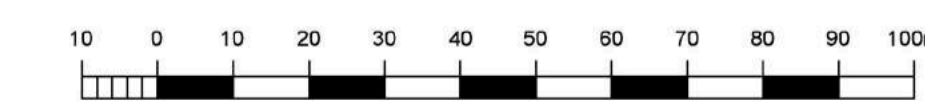
DRAFT

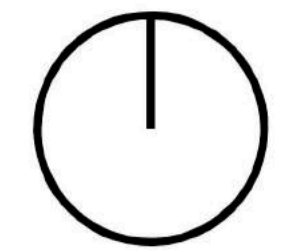
Eden Cottage
Hunt's Corner
Banham
NR16 2HL
01953 887656


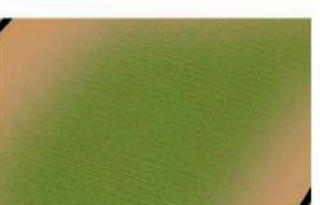
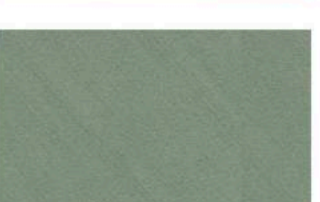



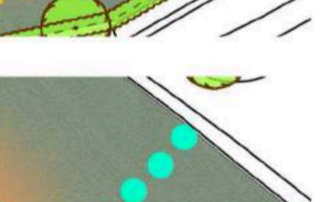



**BROOM
LYNNE**
PLANNING
DESIGN
LANDSCAPE
www.broom-lynn.com
luke@broom-lynn.com

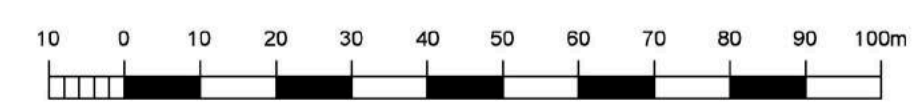


-  Indicative areas of development
-  Gardens and open space within development
-  Existing trees and hedgerow
-  Proposed trees and hedgerow
-  Vehicle access points
-  Potential footpath/cycleway





-  Indicative built frontages
-  Gardens and open space within development
-  Open space
-  Primary route
-  Shared streets
-  Driveways
-  Footpath/cycle/emergency access only
-  Play area
-  Site for primary school or a mix of sheltered/extra care/market housing
-  Potential food store with provision for small park and ride site for Town Council



Norwich Road, Aylsham
Street Heirarchy

Client Norfolk Homes
Date November 2020

Drawing no. 2019-364-006
Revision F

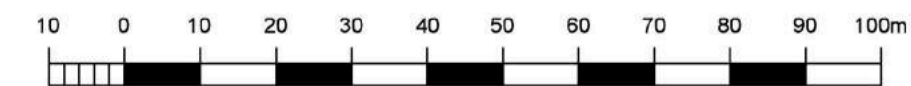
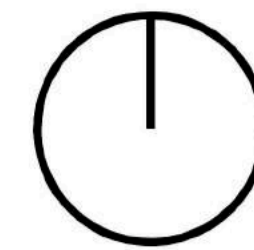
Drawn by LBL
Checked by

Scale 1:1000 @ A1

DRAFT

Eden Cottage
Hunt's Corner
Banham
NR16 2HL
01953 887656

**BROOM
LYNNE**
PLANNING
DESIGN
LANDSCAPE
www.broom-lynne.com
luke@broom-lynne.com



Norwich Road, Aylsham
Indicative Masterplan

Client Norfolk Homes
Date November 2020

Drawing no. 2019-364-007
Revision F

Drawn by LBL
Checked by

Scale 1:1000 @ A1

DRAFT

Eden Cottage
Hunt's Corner
Banham
NR16 2HL
01953 887656

**BROOM
LYNNE**

PLANNING
DESIGN
LANDSCAPE

www.broom-lynn.com
luke@broom-lynn.com