

Appendix A Designated Sites Maps

Vulnerability Maps

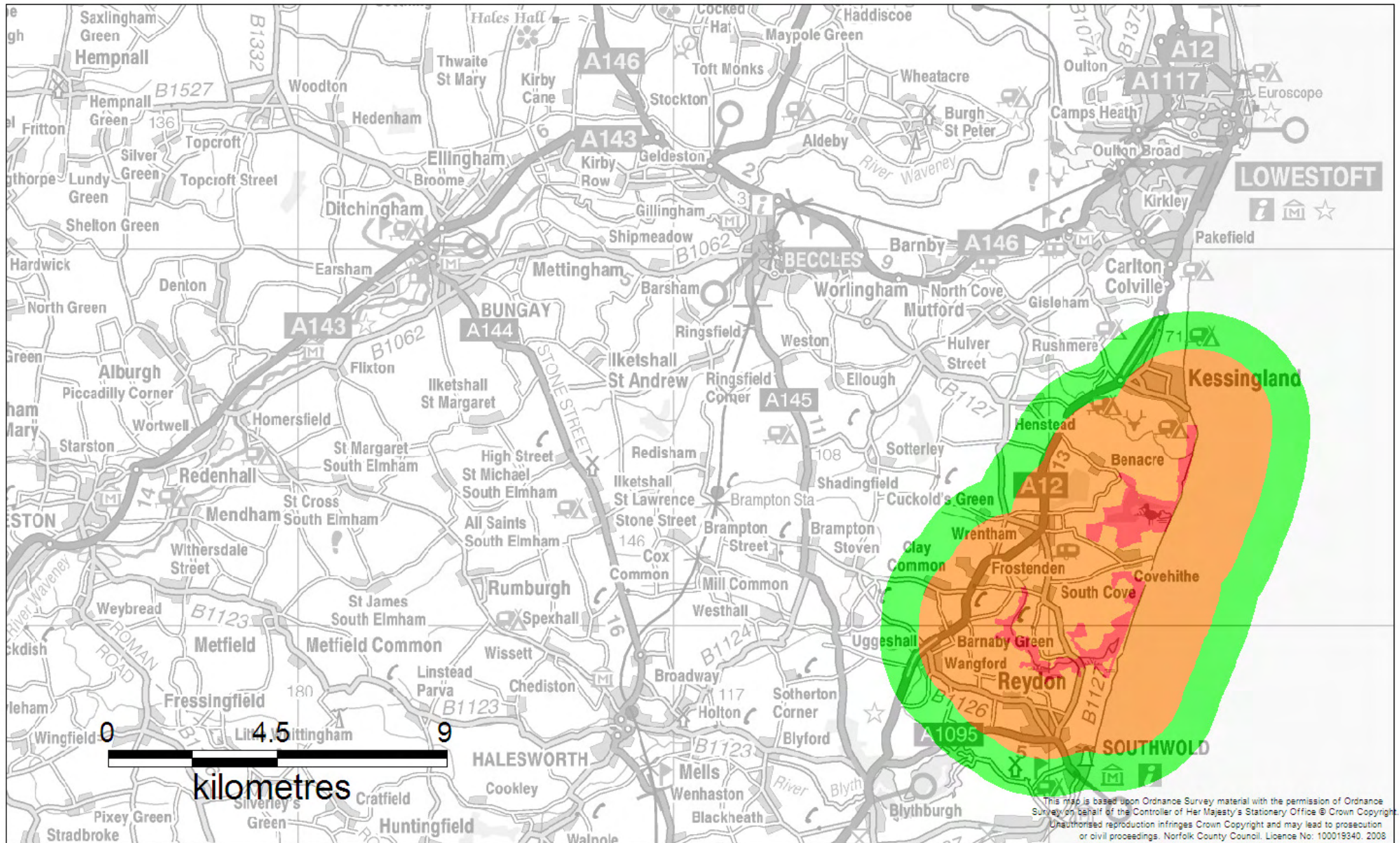
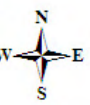
Figure 1: Benacre to Easton Bavents (SAC/SPA)

Compiled by NBIS/NCC April 2009

KEY:

- European Sites within 15km of JCS area
- 2km buffer of site
- 1km buffer from orange zone boundary
- Strategic Growth locations

Norfolk County Council
 County Hall
 Martineau Lane
 Norwich
 NR1 2SG
 Tel: 01603 222143
 Fax: 01603 223219



Vulnerability Maps

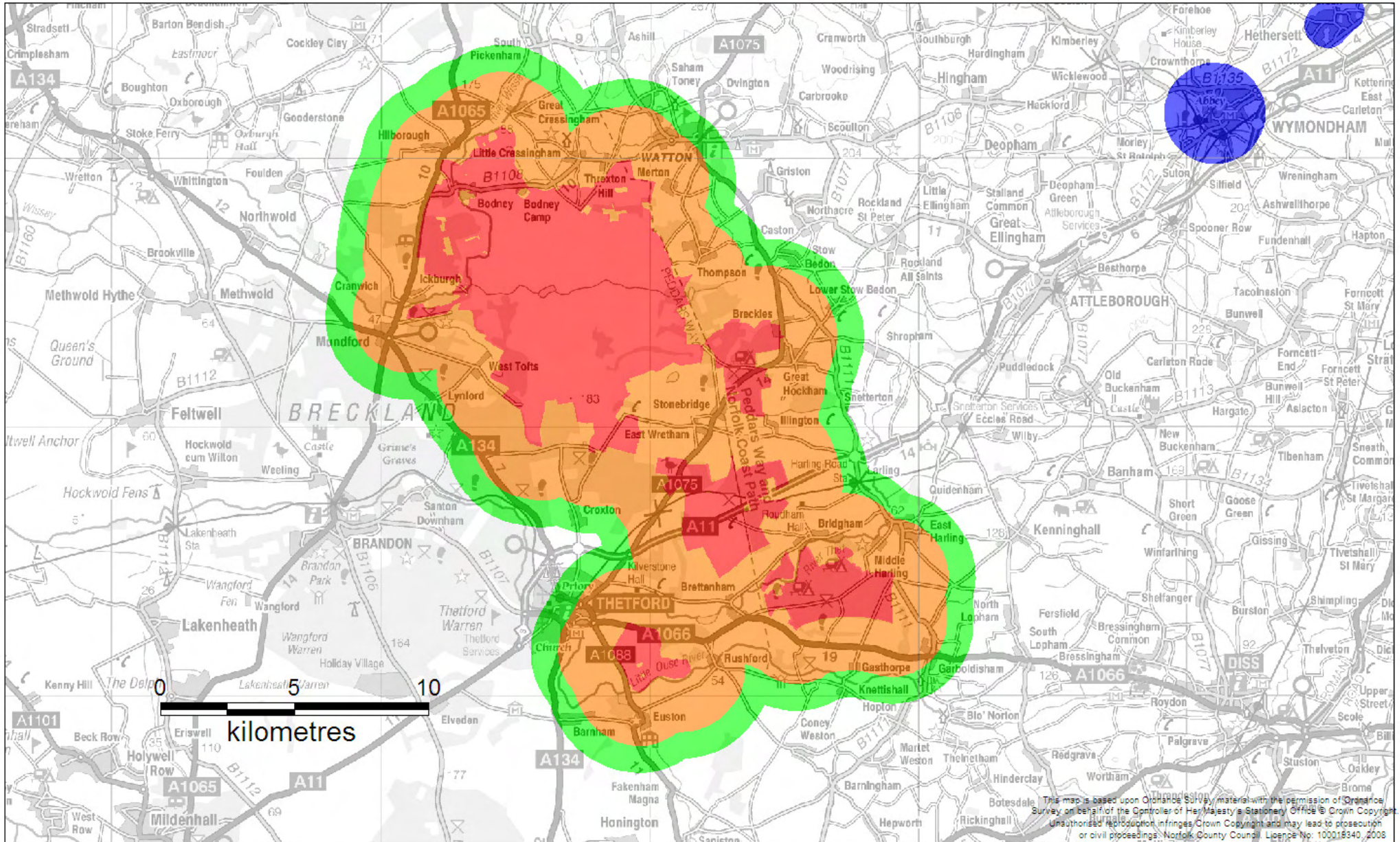
Figure 2: Breckland (SAC/SPA)

Compiled by NBIS/NCC April 2009

KEY:

- European Sites within 15km of JCS area
- 2km buffer of site
- 1km buffer from orange zone boundary
- Strategic growth locations

Norfolk County Council
 County Hall
 Martineau Lane
 Norwich
 NR1 2SG
 Tel: 01603 222143
 Fax: 01603 223219



This map is based upon Ordnance Survey material with the permission of Ordnance Survey on behalf of the Controller of Her Majesty's Stationery Office © Crown Copyright. Unauthorised reproduction infringes Crown Copyright and may lead to prosecution or civil proceedings. Norfolk County Council. Licence No: 100018340, 2008

Vulnerability Maps

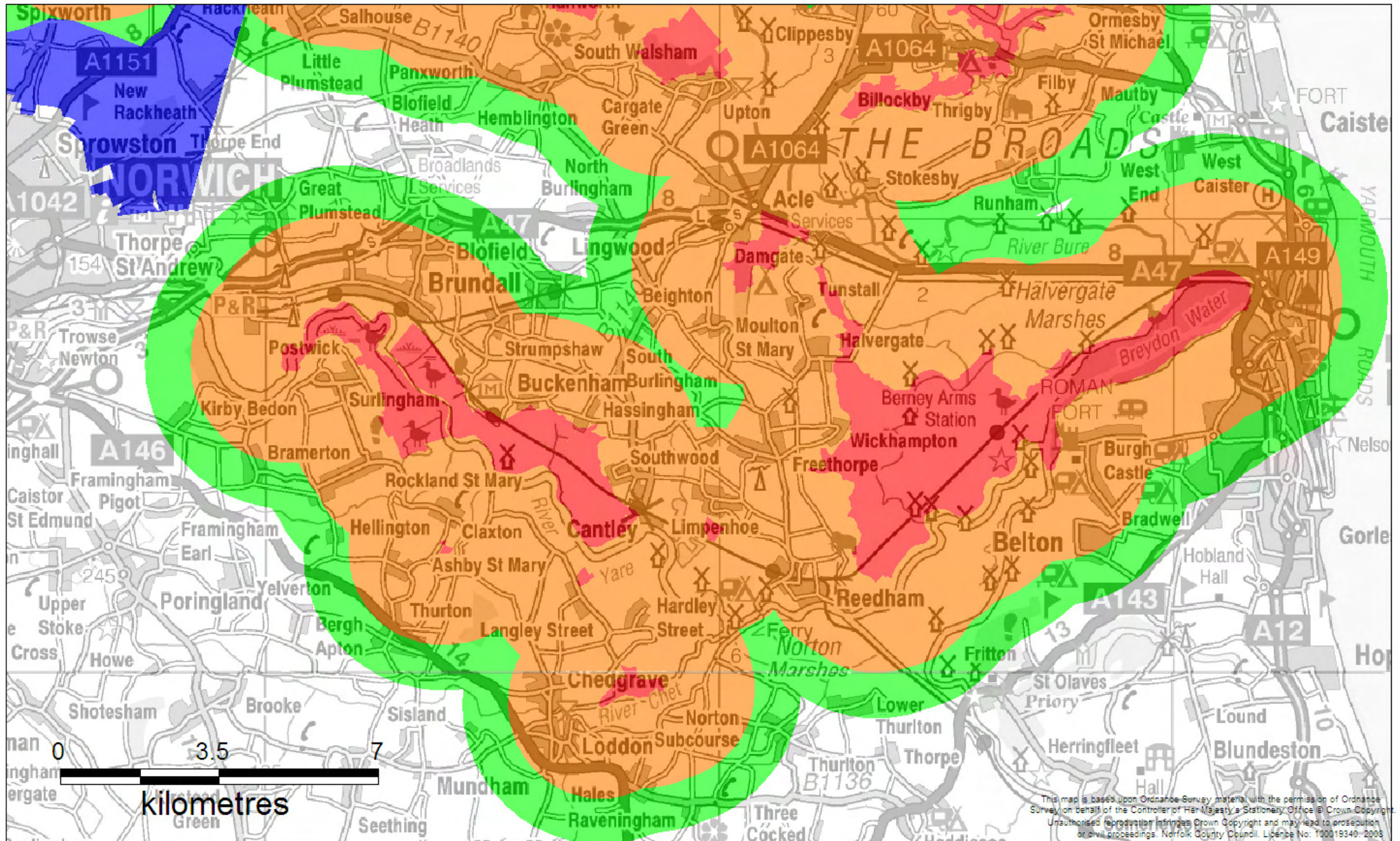
Figure 3a: Broadland/Broads -south (SAC/SPA/Ramsar) AND Breydon Water (SPA/Ramsar)

Compiled by NBIS/NCC April 2009

KEY:

- European Sites within 15km of JCS area
- 2km buffer of site
- 1km buffer from orange zone boundary
- Strategic growth locations

Norfolk County Council
 County Hall
 Martineau Lane
 Norwich
 NR1 2SG
 Tel: 01603 222143
 Fax: 01603 223219



This map is based upon Ordnance Survey material with the permission of Ordnance Survey on behalf of the Controller of Her Majesty's Stationery Office © Crown Copyright. Unauthorised reproduction infringes Crown Copyright and may lead to prosecution or civil proceedings. Norfolk County Council. Licence No: 100019340-2008

Vulnerability Maps

Figure 3b: Broadland/Broads -north (SAC/SPA/Ramsar)

Compiled by NBIS/NCC April 2009

KEY:

European Sites within 15km of JCS area



1km buffer from orange zone boundary



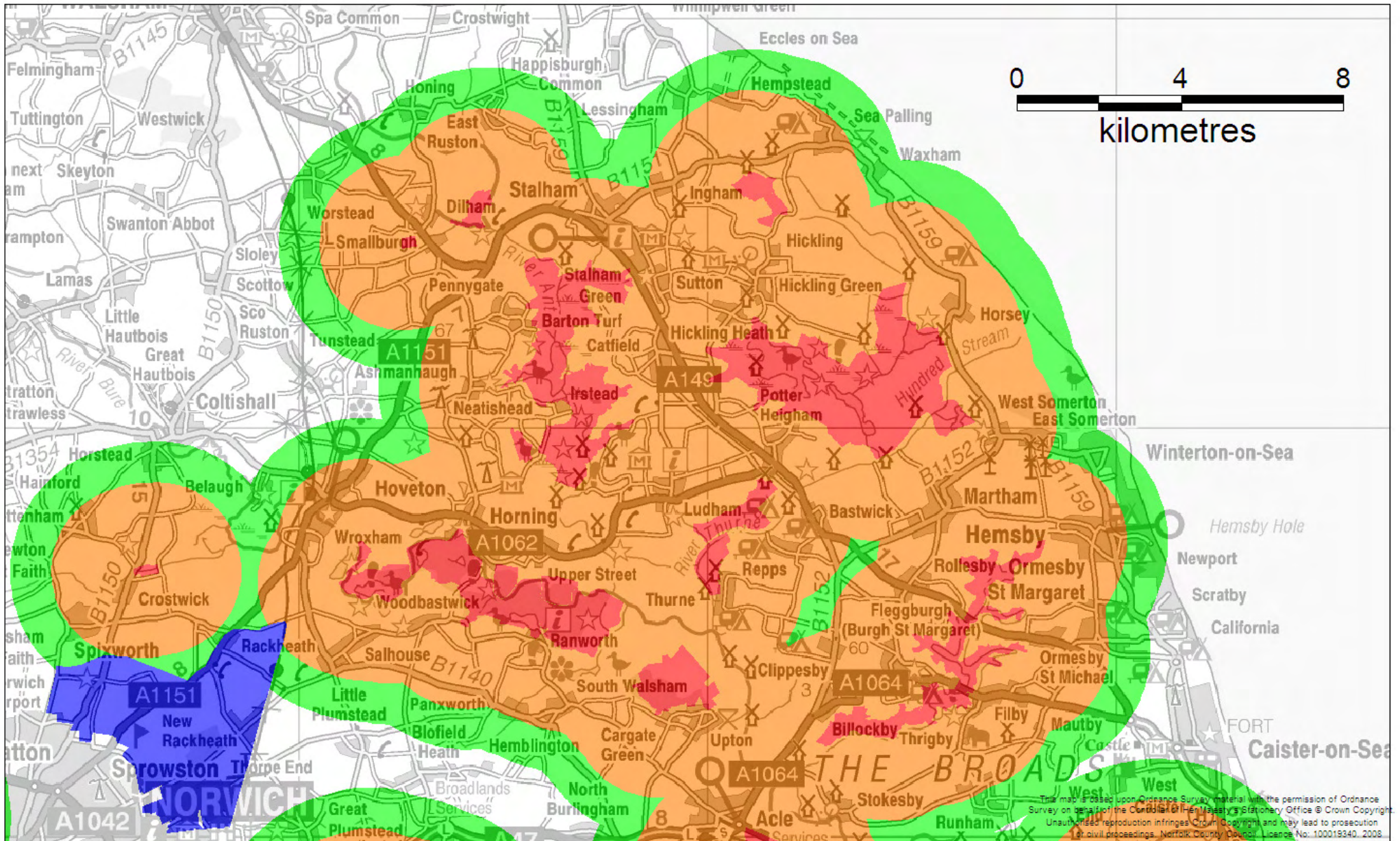
2km buffer of site



Strategic growth locations



Norfolk County Council
County Hall
Martineau Lane
Norwich
NR1 2SG
Tel: 01603 222143
Fax: 01603 223219



This map is based upon Ordnance Survey material with the permission of Ordnance Survey on behalf of the Controller of Her Majesty's Stationary Office © Crown Copyright. Unauthorised reproduction infringes Crown Copyright and may lead to prosecution (or civil proceedings). Norfolk County Council. Licence No: 100019340. 2008.

Vulnerability Maps

Figure 4: Great Yarmouth North Denes (SPA) AND Winterton-Horsey Dunes (SAC)

Compiled by NBIS/NCC April 2009

KEY:

European Sites within 15km of JCS area

2km buffer of site

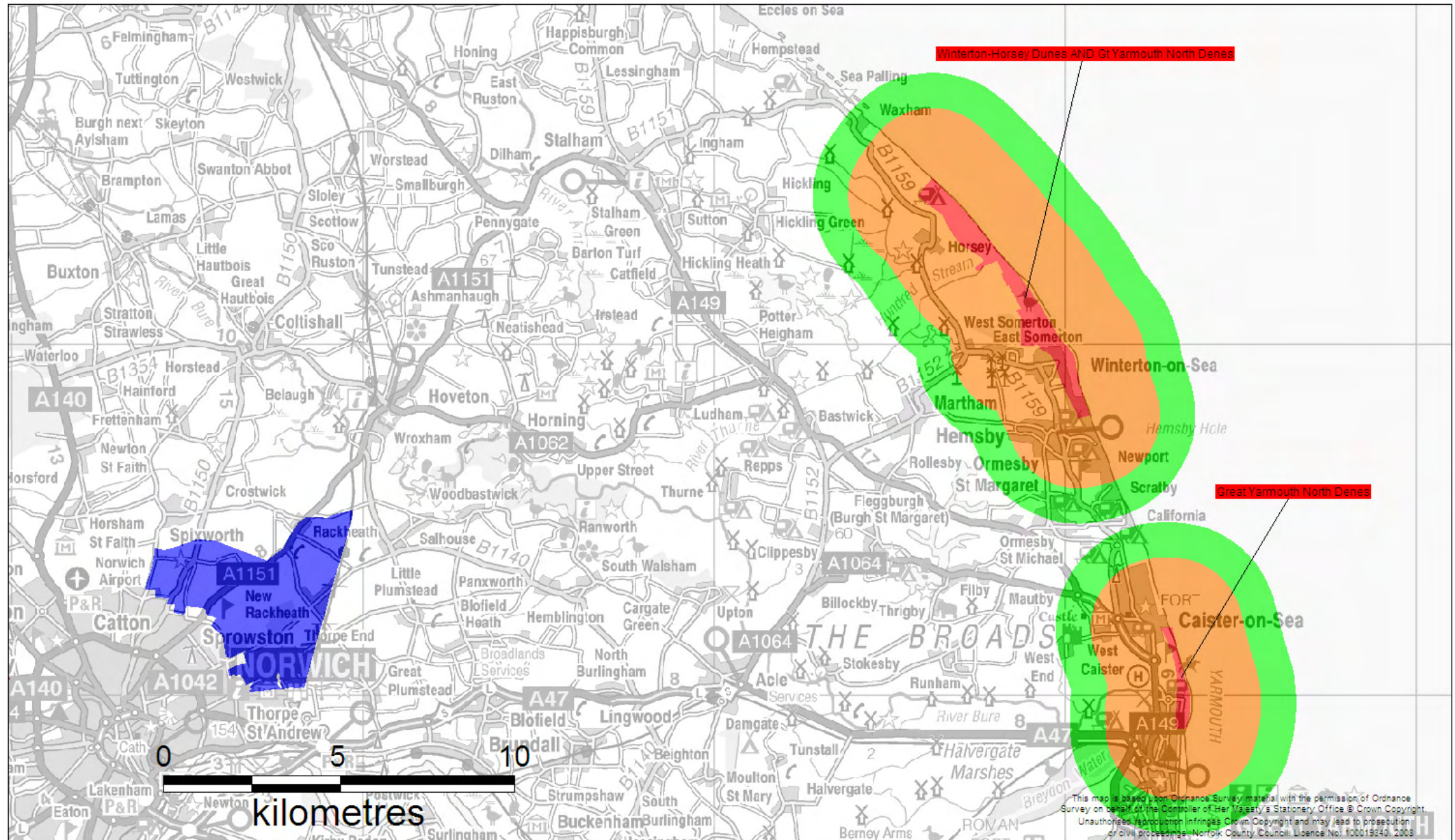


1km buffer from orange zone boundary

Strategic growth locations



Norfolk County Council
County Hall
Martineau Lane
Norwich
NR1 2SG
Tel: 01603 222143
Fax: 01603 223219



This map is based upon Ordnance Survey material with the permission of Ordnance Survey on behalf of the Controller of Her Majesty's Stationary Office © Crown Copyright. Unauthorised reproduction infringes Crown Copyright and may lead to prosecution or civil proceedings. Norfolk County Council, Licence No. 100019240, 2008.

Vulnerability Maps

Figure 5: Minsmere-Walberswick (SPA/Ramsar)

Compiled by NBIS/NCC April 2009

KEY:

European Sites within 15km of JCS area

2km buffer of site

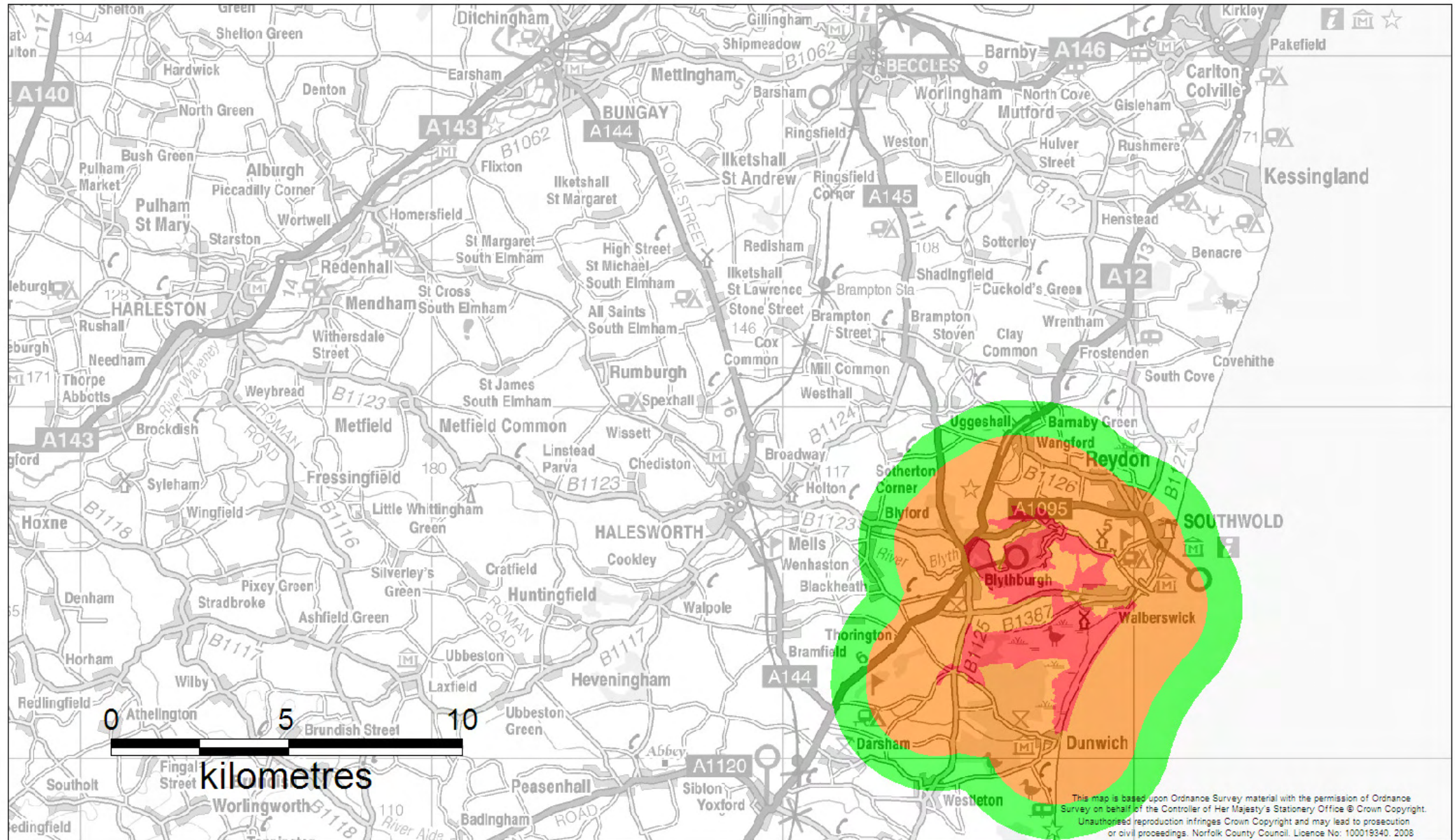


1km buffer from orange zone boundary

Strategic growth locations



Norfolk County Council
County Hall
Martineau Lane
Norwich
NR1 2SG
Tel: 01603 222143
Fax: 01603 223219



This map is based upon Ordnance Survey material with the permission of Ordnance Survey on behalf of the Controller of Her Majesty's Stationary Office © Crown Copyright. Unauthorised reproduction infringes Crown Copyright and may lead to prosecution or civil proceedings. Norfolk County Council. Licence No: 100019340. 2008

Vulnerability Maps

Figure 6: North Norfolk Coast (SAC, SPA, Ramsar)

Compiled by NBIS/NCC April 2009

KEY:

European Sites within 15km of JCS area



1km buffer from orange zone boundary



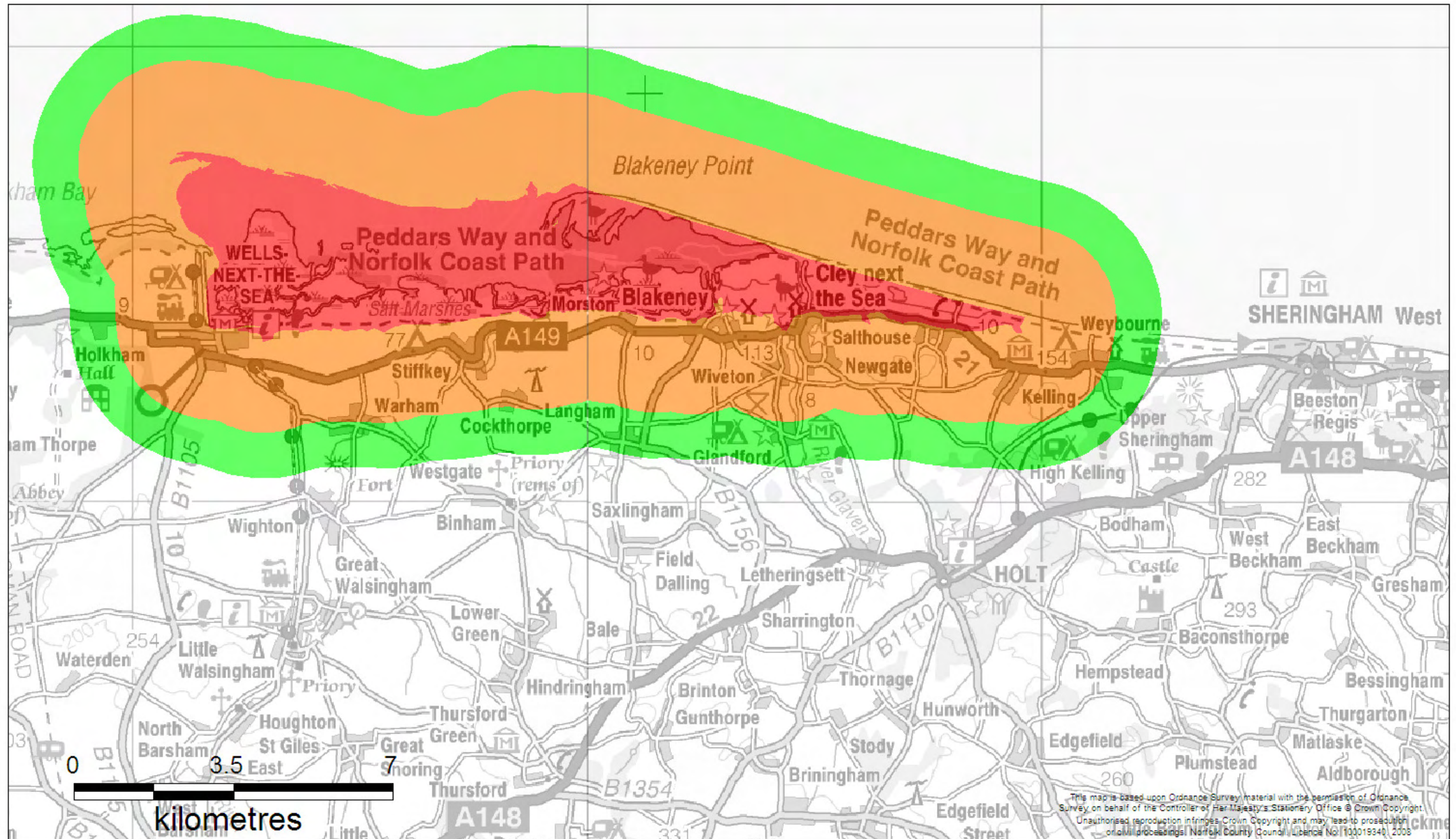
2km buffer of site



Strategic growth locations



Norfolk County Council
County Hall
Martineau Lane
Norwich
NR1 2SG
Tel: 01603 222143
Fax: 01603 223219



This map is based upon Ordnance Survey material with the permission of Ordnance Survey on behalf of the Controller of Her Majesty's Stationary Office © Crown Copyright. Unauthorised reproduction infringes Crown Copyright and may lead to prosecution or other proceedings. Norfolk County Council, Licence No: 100019340, 2008

Vulnerability Maps

Figure 7: Wash (SAC, SPA, Ramsar)

Compiled by NBIS/NCC April 2009

KEY:

European Sites within 15km of JCS area

2km buffer of site

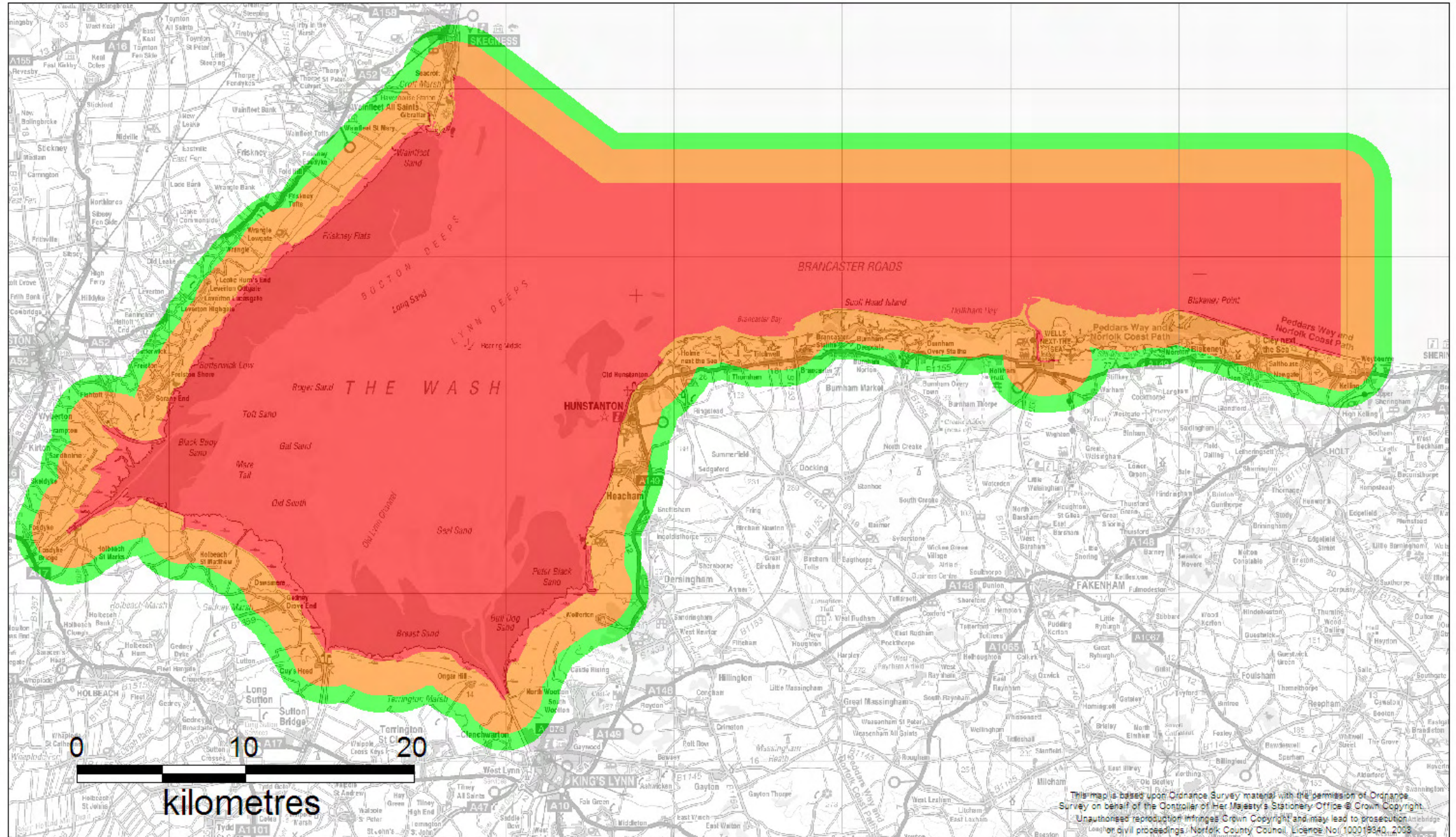


1km buffer from orange zone boundary

Strategic growth locations



Norfolk County Council
County Hall
Martineau Lane
Norwich
NR1 2SG
Tel: 01603 222143
Fax: 01603 223219



This map is based upon Ordnance Survey material with the permission of Ordnance Survey on behalf of the Controller of Her Majesty's Stationery Office © Crown Copyright. Unauthorised reproduction infringes Crown Copyright and may lead to prosecution or civil proceedings. Norfolk County Council, Licence No: 100019340, 2008

Vulnerability Maps

Figure 8a: Norfolk Valley Fens -north (SAC)

Compiled by NBIS/NCC April 2009

KEY:

European Sites within 15km of JCS area

2km buffer of site



1km buffer from orange zone boundary

Strategic growth locations



Norfolk County Council
County Hall
Martineau Lane
Norwich
NR1 2SG
Tel: 01603 222143
Fax: 01603 223219



This map is based upon Ordnance Survey material with the permission of Ordnance Survey on behalf of the Controller of Her Majesty's Stationery Office © Crown Copyright. Unauthorised reproduction infringes Crown Copyright and may lead to prosecution or civil proceedings. Norfolk County Council, Licence No: 100019940/2008.

Vulnerability Maps

Figure 8b: Norfolk Valley Fens - south (SAC)

Compiled by NBIS/NCC April 2009

KEY:

European Sites within 15km of JCS area

2km buffer of site

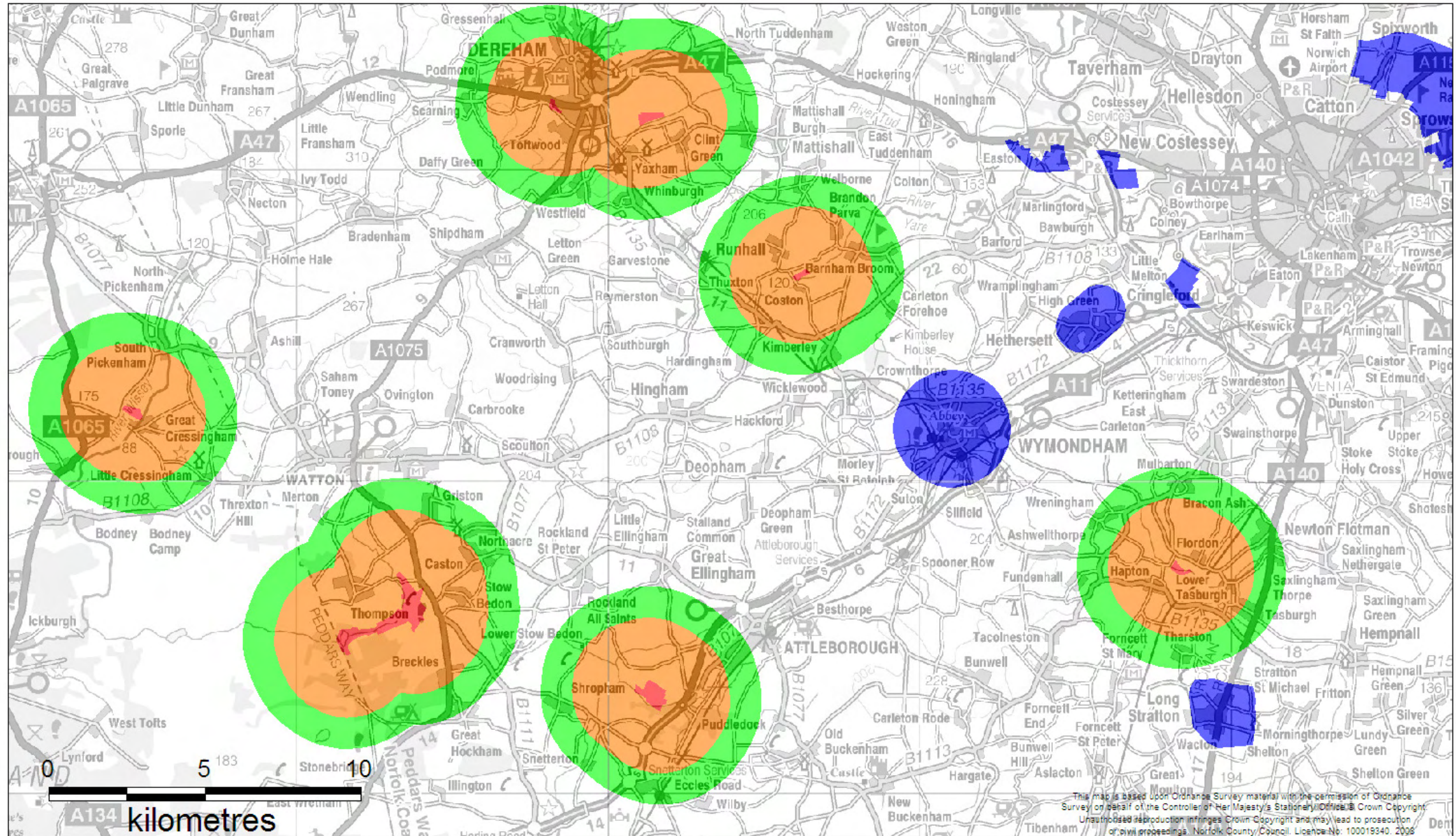


1km buffer from orange zone boundary

Strategic growth locations



Norfolk County Council
County Hall
Martineau Lane
Norwich
NR1 2SG
Tel: 01603 222143
Fax: 01603 223219



Vulnerability Maps

Figure 9: Overstrand Cliffs (SAC)

Compiled by NBIS/NCC April 2009

KEY:

European Sites within 15km of JCS area



1km buffer from orange zone boundary



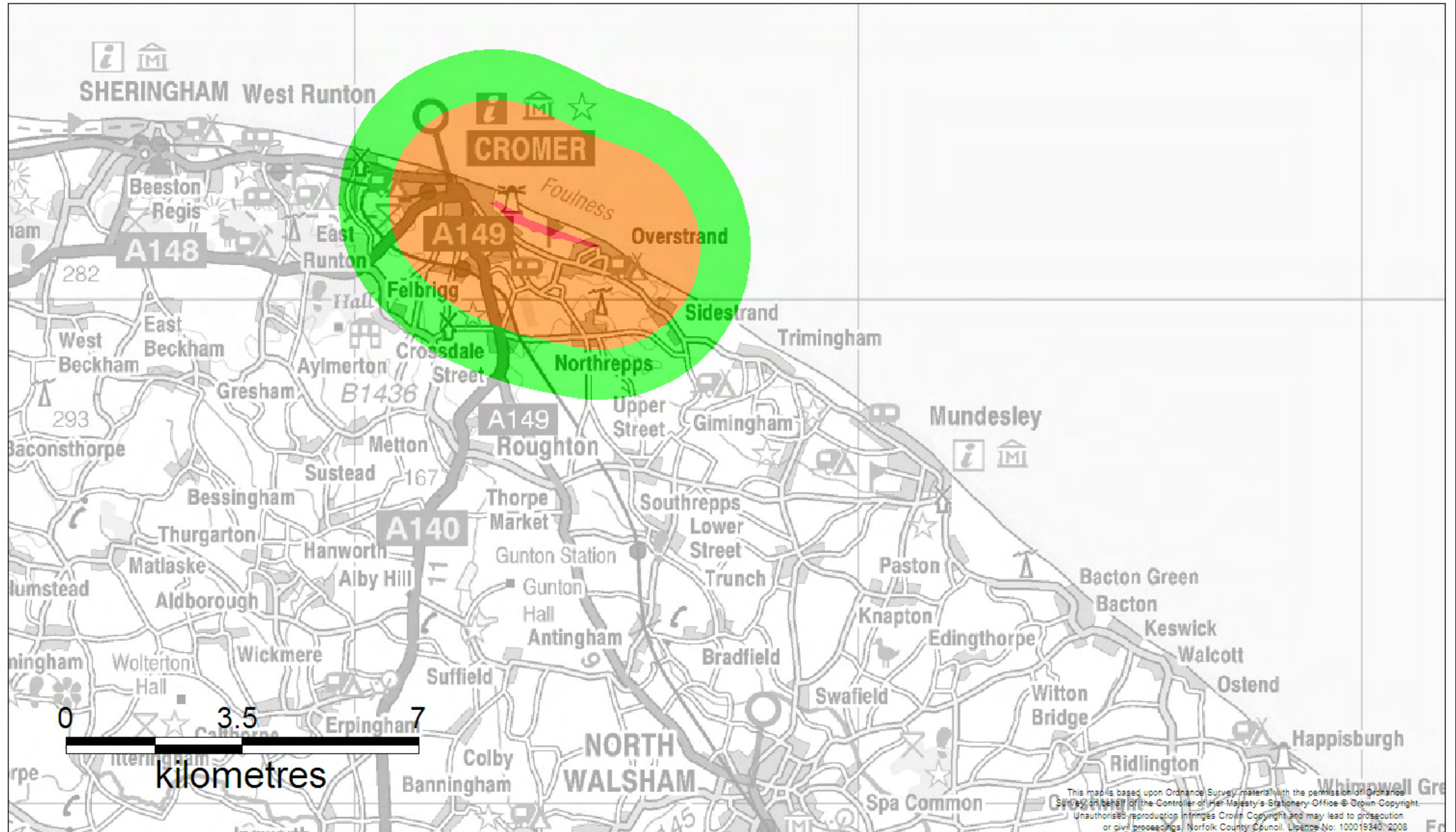
2km buffer of site



Strategic growth locations



Norfolk County Council
County Hall
Martineau Lane
Norwich
NR1 2SG
Tel: 01603 222143
Fax: 01603 223219



This map is based upon Ordnance Survey material with the permission of Ordnance Survey on behalf of the Controller of Her Majesty's Stationery Office © Crown Copyright. Unauthorised reproduction infringes Crown Copyright and may lead to prosecution or civil proceedings. Norfolk County Council. Licence No: 100019340/2008

Vulnerability Maps

Figure 10: Paston Great Barn (SAC)

Compiled by NBIS/NCC April 2009

KEY:

European Sites within 15km of JCS area

10km buffer of site

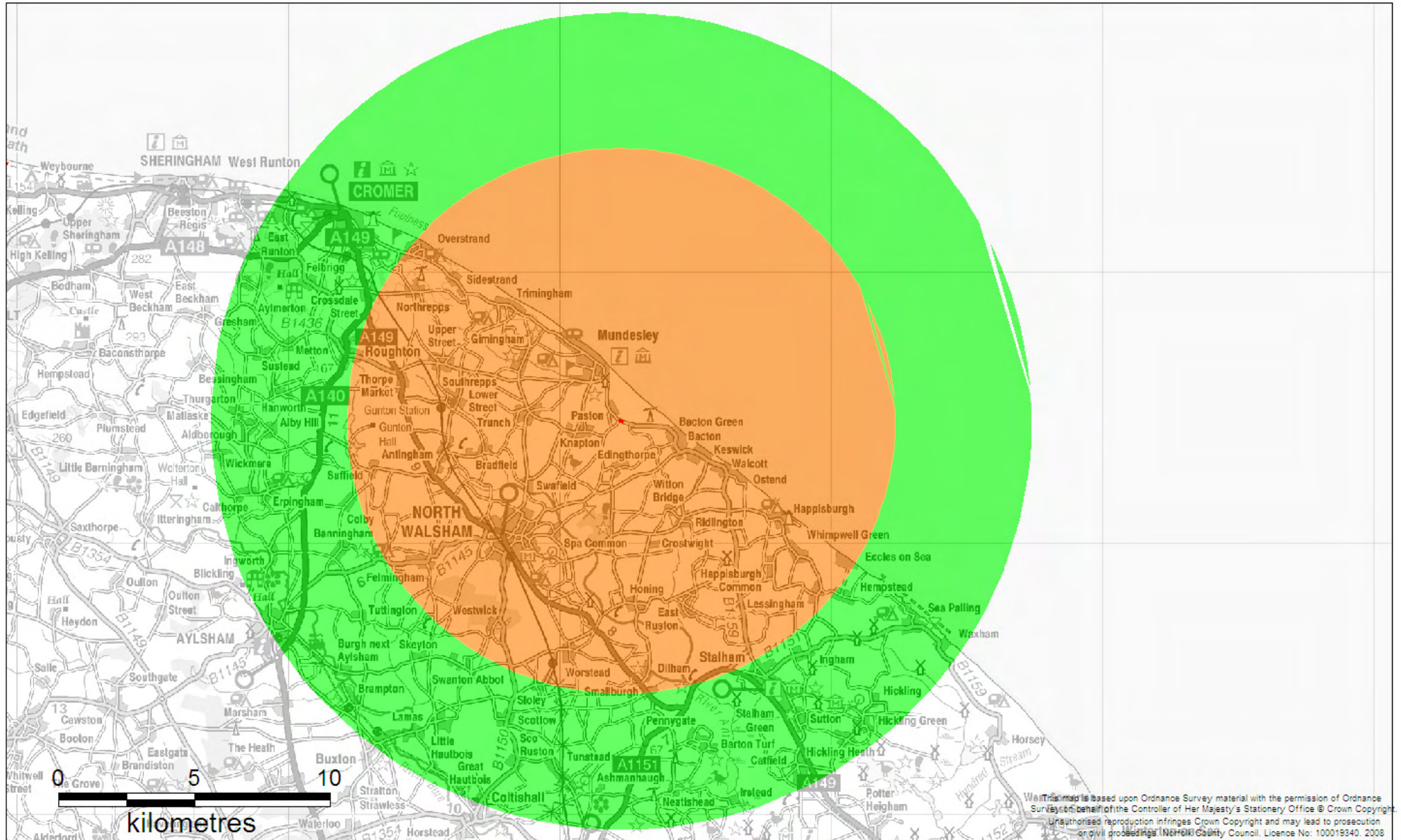


5km buffer from orange zone boundary

Strategic growth locations



Norfolk County Council
County Hall
Martineau Lane
Norwich
NR1 2SG
Tel: 01603 222143
Fax: 01603 223219



This map is based upon Ordnance Survey material with the permission of Ordnance Survey on behalf of the Controller of Her Majesty's Stationary Office © Crown Copyright. Unauthorised reproduction infringes Crown Copyright and may lead to prosecution or civil proceedings. NORFOLK County Council. Licence No: 100019340. 2008

Vulnerability Maps

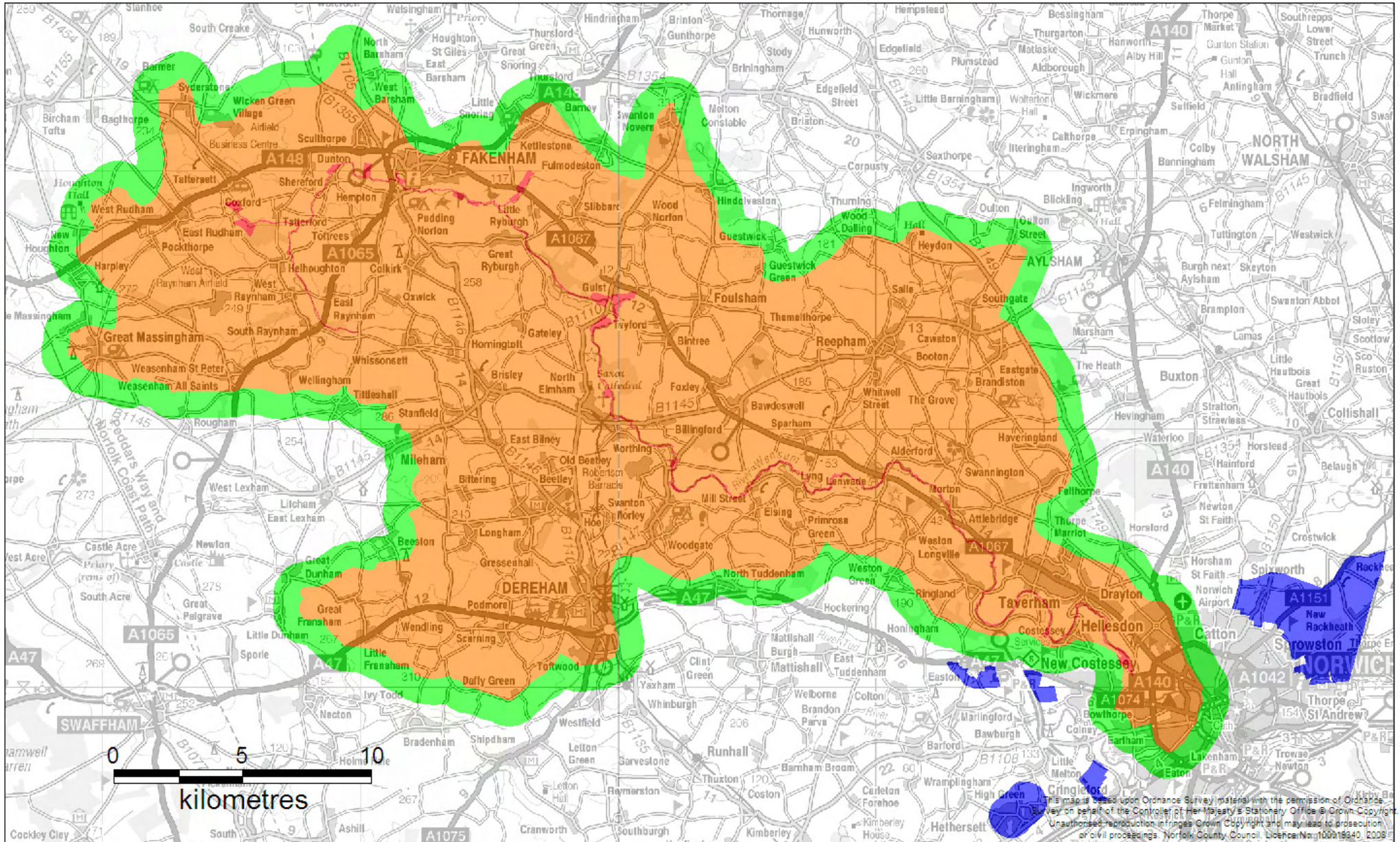
Figure 11: River Wensum (SAC)

Compiled by NBIS/NCC April 2009

KEY:

- European Sites within 15km of JCS area
- River Wensum hydrometric catchment buffer
- 1km buffer from orange zone boundary
- Strategic growth locations

Norfolk County Council
 County Hall
 Martineau Lane
 Norwich
 NR1 2SG
 Tel: 01603 222143
 Fax: 01603 223219



This map is based upon Ordnance Survey material with the permission of Ordnance Survey on behalf of the Controller of Her Majesty's Stationary Office © Crown Copyright. Unauthorised reproduction in any form is prohibited. This map may lead to prosecution or civil proceedings. Norfolk County Council, Licence No: 100019340, 2008

Vulnerability Maps

Figure 12: Redgrave and South Lopham Fens (Ramsar) AND Waveney and little Ouse Fens (SAC)

Compiled by NBIS/NCC April 2009

KEY:

European Sites within 15km of JCS area

2km buffer of site



1km buffer from orange zone boundary

Strategic growth locations



Norfolk County Council
County Hall
Martineau Lane
Norwich
NR1 2SG
Tel: 01603 222143
Fax: 01603 223219

